

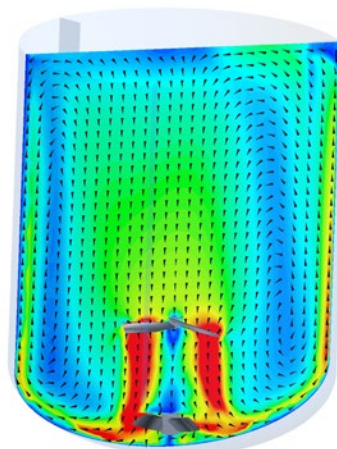
KT-3 Impeller

DESIGNED FOR CHEMICAL, INDUSTRIAL AND SANITARY APPLICATIONS

The KT-3 impeller is a three bladed impeller specifically designed for use as a close clearance lower impeller in a dish or shallow cone bottomed tank with a bottom outlet.

The KT-3 impeller minimizes solids settling and prevents cavitation of the pump suction by swirling the tank contents and sweeping solids towards the outlet. This asymmetric "wave" pattern in the bottom dish also shortens drainage times by keeping the product flowing into the pump. The KT-3 does not "suspend" solids. However, this wave action constantly sweeps the bottom of the dish allowing for solids to move downward towards the outlet. Its main purpose is to eliminate solids from the tank bottom.

- Low power consumption
- Easily retrofitable
- Removes most (~100%) of solids in dished vessel



KT-3 in Action

The KT-3 impeller is specifically designed and shaped to sit inside and nearly parallel to the tank bottom profile of an ASME dish or shallow cone. Its performance has been evaluated at multiple scales with significant results.

In one case, a solids heel was reduced 98.9% by adding the KT-3. The KT-3 is patented by Dow Chemical and licensed for sale exclusively by Lightnin.



A310 kicker to the left,
product still visible in tank.



KT-3 kicker to the
left, no product left
in tank.

Service & Support

- Equipment Services
- PM/PDM Services
- Additional Services
 - Installation and Startup
 - Maintenance and Repair
 - Asset Management

For 24-hour response, call 1-888-MIX-BEST (U.S. and Canada).

Call the SPX Experts

For more information about the Lightnin KT-3 Impeller or to discuss your application, contact your local SPX FLOW Sales Representative at:

<http://www.spx.com/en/lightnin/where-to-buy/>

or visit our website at www.spx.com.

Or call 1-888-MIX-BEST (U.S. and Canada).

For Sales locations click
<http://www.spxflow.com/en/lightnin/where-to-buy/>
or use your SmartPhone and the QR Code



To view the KT-3 Comparison youtube video
scan the QR code to the right.

Or go to <http://www.youtube.com/watch?v=HPAEKYkJyMw>



SPX FLOW, Inc. - Global locations

USA

13320 Ballantyne Corporate Place
Charlotte, NC 28277
United States of America
+1 704 752 4400

CHINA

2F, Treasury Centre
No. 1568 Huashan Road
Shanghai 200052, China
P: +86 (21) 22085889

UK

Ocean House,
Towers Business Park
Didsbury, Manchester
M20 2LY, UK
P: +44 161 249 1170

SPXFLOW

SPX FLOW, LLC - LIGHTNIN & PLENTY MIXERS

135 Mt. Read Blvd., Rochester, NY 14611

P: (888) 649-2378 (MIX-BEST), (US and Canada) or +1 (585) 436-5550

E: lightnin@spxflow.com ▪ www.spxflow.com/lightnin

SPX FLOW, Inc. reserves the right to incorporate our latest design and material changes without notice or obligation. Design features, materials of construction and dimensional data, as described in this bulletin, are provided for your information only and should not be relied upon unless confirmed in writing. Please contact your local sales representative for product availability in your region. For more information visit www.spxflow.com. The green "S" and "X" are trademarks of SPX FLOW, Inc. COPYRIGHT © 2015 SPX FLOW, Inc.