

Gerstenberg Schröder Kombinator 250 SHCW

SCRAPED SURFACE HEAT EXCHANGER

GS Kombinator 250 SHCW Benefits:

When pasteurization of margarine and low fat spread emulsions on the high pressure side is required, the GS Kombinator 250 SHCW is your choice.

The GS Kombinator 250 SHCW consists of one or two heating tubes and a double-walled cooling coil for higher cooling efficiency. This unit is mainly used for low fat spread emulsion containing high amount of protein and stabilizers to avoid fouling of the emulsion on the inner surface of the tubes and thereby obtain longer and more efficient production time.

This GS Kombinator unit is used for heating margarine and low fat spreads emulsions typically from 45°C to 85°C and for the subsequent cooling to 40°C.

HEATING

The product is heated by means of saturated steam up to 5 bar (g). The tube is surrounded by a condenser and it is installed in a solid steel construction and surrounded by a totally closed jacket of stainless steel plate filled with environmental friendly insulation material. The GS Kombinator 250 SHCW includes all necessary temperature regulation equipment.

SCRAPER ROTOR SYSTEM

The scraper rotor system inside the heating tubes consists of floating scraper manufactured in plastic. The scrapers ensure a continuous effective scraping off the product from the cylinder wall and thus an efficient heat exchange.



COOLING

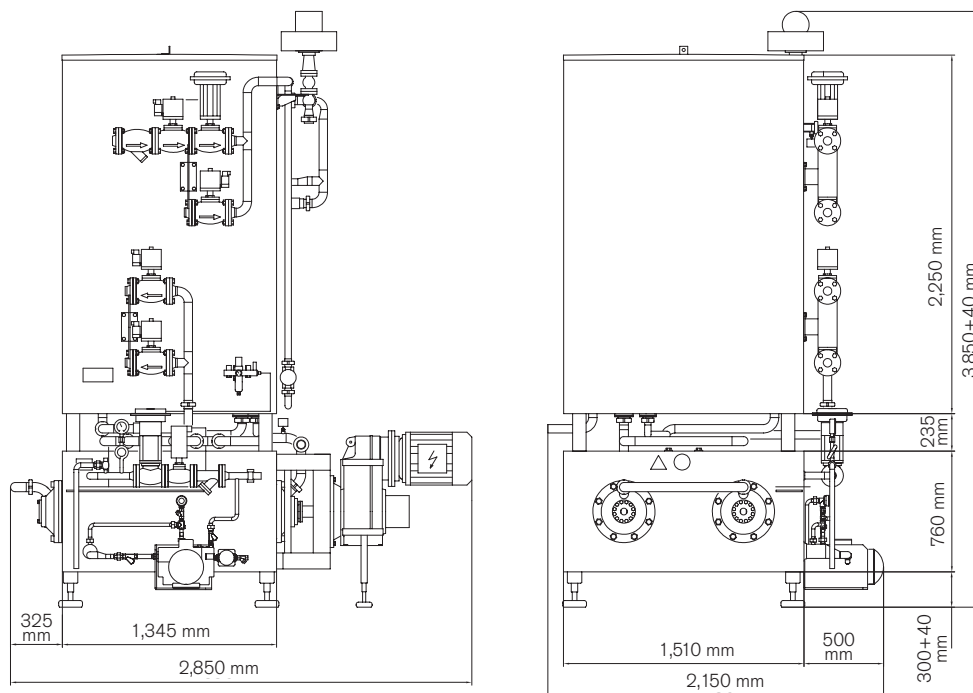
The double tube coil which is used to cool the emulsion is situated above the heating tubes. The tubular coil is positioned in a stainless steel casing. The double tube coil is cooled with water on the outside as well as on the inside of the tube wall.

MATERIALS

Product contacting parts are made of stainless steel AISI 304, except the double-tube coil which is made of stainless steel AISI 316.

GS KOMBINATOR 250 SHCW	250S SHCW	250S 2SHCW	250L SHCW	250L 2SHCW
NOMINAL CAPACITY - MARGARINE WITH 80% FAT CONTENT [KG/H]	3,100	6,200	4,400	8,800
NOMINAL CAPACITY - MARGARINE WITH 40% FAT CONTENT [KG/H]	2,200	4,400	3,100	6,200
NUMBER OF STEAM SYSTEMS	1	1	1	1
MOTORS [kW]	5.5	2x5.5	7.5	2x7.5
NUMBER OF GEAR BOXES	1	2	1	2
HEATING SURFACE PER TUBE [M ²]	1.05	1.05	1.5	1.5
ANNULAR SPACE [MM]	11	11	11	11
STEAM AT 5 BAR [KG/H]	180	360	260	520
MAX. WORKING TEMPERATURE [°C]	165	165	165	165
MAX. WORKING PRESSURE - PRODUCT SIDE [BAR]	75/120	75/120	75/120	75/120
HEATING TUBE DIAMETER/LENGTH [MM]	250/1,400	250/1,400	250/2,000	250/2,000
PRODUCT VOLUME PR. TUBE [L]	15	15	20	20
PRODUCT PIPE IN/OUT [MM]	DN50	DN50	DN50	DN50
ROWS OF SCRAPERS	4	4	4	4
NOMINAL SCRAPER ROTOR SPEED [RPM]*	315	315	315	315
COOLING WATER AT 18°C [M ³ /H]	6	12	8.5	17
SHIPPING WEIGHT TOTAL IN 2 BOXES [KG]*	4,300	5,800	5,600	8,700

* Approximately.



GS Kombinator 250S 2SHCW

SPXFLOW

SPX FLOW Oestmarken 7, 2860 Soeborg, Denmark

P: +45 70 278 222, F: +45 70 278 223

E: gs.dk.sales@spxflow.com · www.spxflow.com

SPX FLOW reserves the right to incorporate our latest design and material changes without notice or obligation. Design features, materials of construction and dimensional data, as described in this bulletin, are provided for your information only and should not be relied upon unless confirmed in writing. Please contact your local sales representative for product availability in your region. For more information visit www.spxflow.com. The green ">" is a trademark of SPX FLOW, Inc.

GS-207-GB VERSION 02/2016 ISSUED 01/2017

COPYRIGHT © 2016 SPX FLOW, Inc.